

PART OF S.W. 1/4 OF SEC. 17, T.7 N., R.1 W., S.L.B. & M.
MAJESTIC HEIGHTS SUBDIVISION NO. 9

105

TAXING UNIT 63

LOTS 168-173

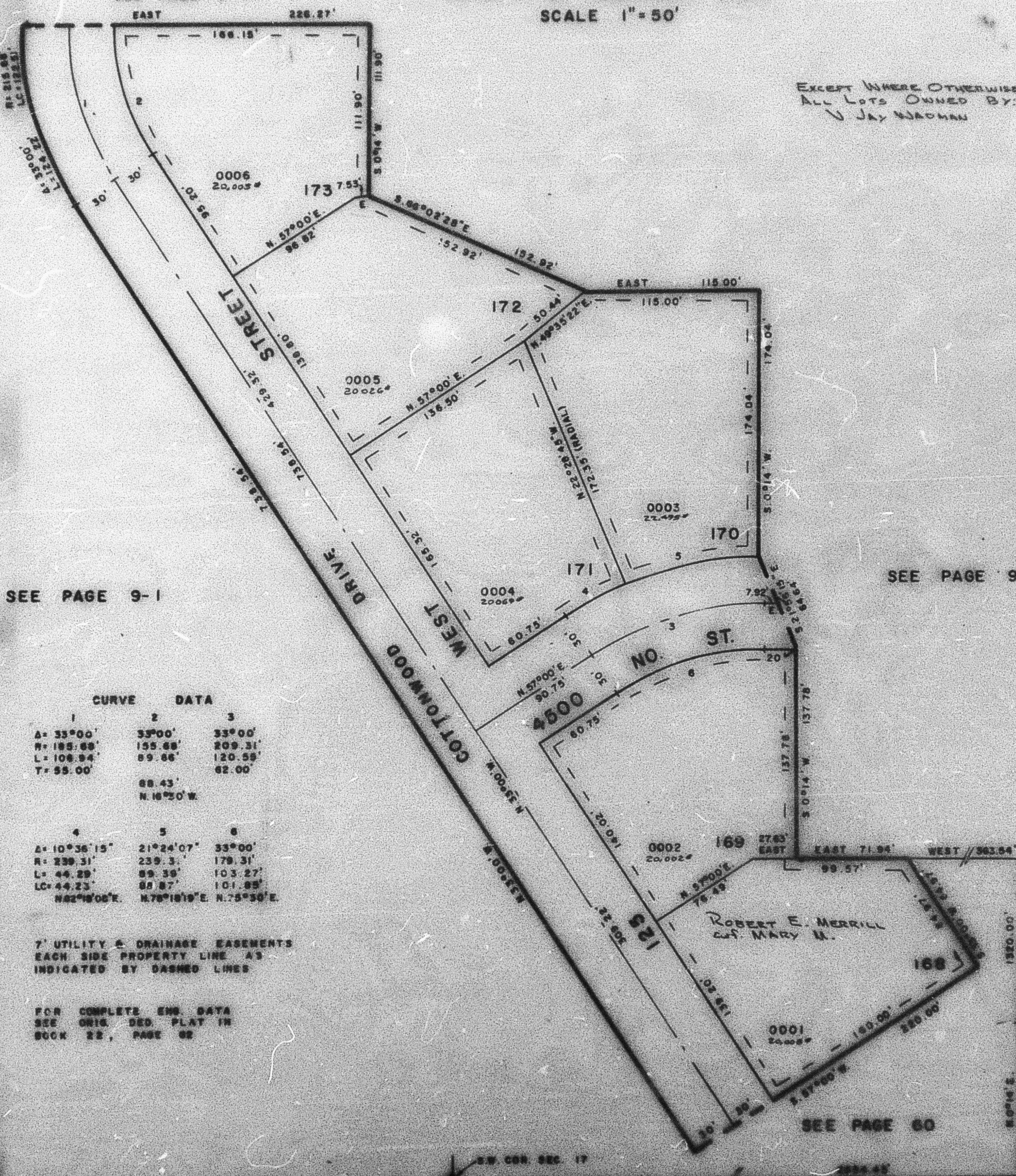
PREFIX 16-105

IN CITY OF PLEASANT VIEW

SCALE 1" = 50'

SEE PAGE 9-1

EXCEPT WHERE OTHERWISE SHOWN
 ALL LOTS OWNED BY:
 JAY MADHAN



SEE PAGE 9-1

SEE PAGE 9-1

SEE PAGE 60

CURVE DATA

1	2	3
A = 33°00'	33°00'	33°00'
R = 185.88'	155.88'	209.31'
L = 108.94'	89.86'	120.59'
T = 55.00'		62.00'
	88.43'	
	N. 16°50' W.	
4	5	6
A = 10°36'15"	21°24'07"	33°00'
R = 239.31'	239.31'	179.31'
L = 44.29'	89.39'	103.27'
LC = 44.23'	89.87'	101.85'
N 82°18'06" E.	N 78°18'19" E.	N 25°30' E.

7' UTILITY & DRAINAGE EASEMENTS
 EACH SIDE PROPERTY LINE AS
 INDICATED BY DASHED LINES

FOR COMPLETE ENG. DATA
 SEE ORIG. DEED PLAT IN
 BOOK 22, PAGE 82

S.W. COR. SEC. 17

2024.45'
 N. 82°18'06" E.